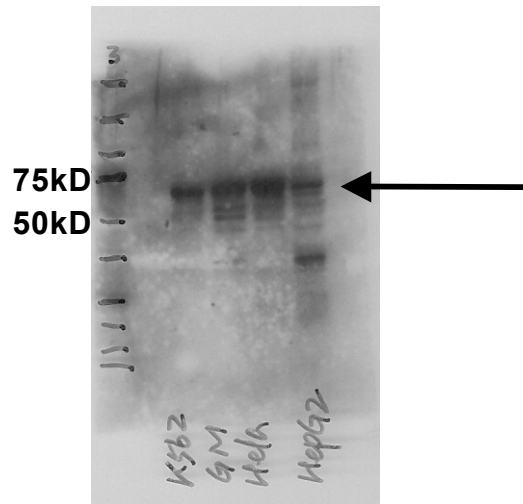


Antibody: RFX5 Source: Rockland #200-401-194

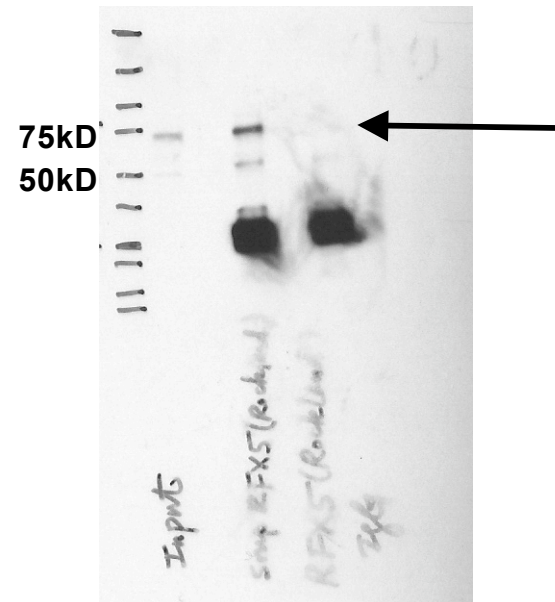
Epitope: Rabbit polyclonal against RFX5 peptide corresponding to a region from amino acids 320 to 494 of the human protein conjugated to Keyhole Limpet Hemocyanin

Validation 1: Immunoblotting

Arrow indicates band consistent with expected size (65kD) of RFX5 in nuclear lysates from (left to right): K562, GM12878, HeLaS3, and HepG2 cell lines.



Arrow indicates immunoprecipitated (IP) band of expected size from HeLaS3 nuclear lysates. Lane 1= HeLaS3 nuclear lysate, Lane 2= bound material from HeLaS3 IP with 200-401-194, Lane 3= bound material from control IgG IP from HeLaS3. IPs were performed with the ExactaCruz reagent (Santa Cruz Biotechnology), so the intensities of IgG bands, particularly the heavy chain at 55kD, are diminished.



Validation 2: In Progress